

CASSIA



DOWNLOAD LINK: [BRETZ.MEDIA/EN/DOWNLOAD/CASSIA-LOUNGECHAIR-PRESSRELEASE](https://bretz.media/en/download/cassia-loungechair-pressrelease)

KONTAKT: MEIKE STEINBERG **TELEFON:** +49-172-614 36 01

MEIKE.STEINBERG@BRETZ.DE | [BRETZ.COM](https://bretz.com) | [BRETZ.MEDIA](https://bretz.media)

Bretz

CASSIA

LOUNGECHAIR

The most **intimate conversations** happen in confidence.
Our Cassia lounge chair, which opens up similarly to a cassia bark tree, invites you to this exact form of communicative comfort.

Its **curved form** keeps humans as well as secrets safe, all while being softly placed in between folds and linear indentions.
The base frame, on which the arm chair can **turn as well as swivel**, allows for conversations with a literal devotion.

The design of
the **Cassia Loungechair**
ist based on the form of the
Cassia Dining Chair.



B 156 CASSIA ▶67 CM ▼57 CM ▲87 CM
STOFF · FABRIC · TISSU 64 1968
FUSS · FEET · PIED 88



C 156 CASSIA ▶61 CM ▼45 CM ▲38-40 CM
STOFF · FABRIC · TISSU 65 9622
FUSS · FEET · PIED 82



A 156 CASSIA ▶85 CM ▼88-95 CM ▲107 CM
STOFF · FABRIC · TISSU 65 9622
FUSS · FEET · PIED 82

Facts & Highlights

- loungy chair inspired by a **blossom**
- curved seat and back made out of molded wood
- integrated Bonell feathers for the best seating comfort
- endowed with a soft going **mechanism to swivel and bob**

A 156 CASSIA ▶ 85 CM ▼ 88-95 CM ▲ 107 CM
STOFF · FABRIC · TISSU 64 1985
FUSS · FEET · PIED 82

COLLECTION CASSIA LOUNGECHAIR



STOFF · RAINFOREST 66 8430



STOFF · GOLD GREEN 64 1978



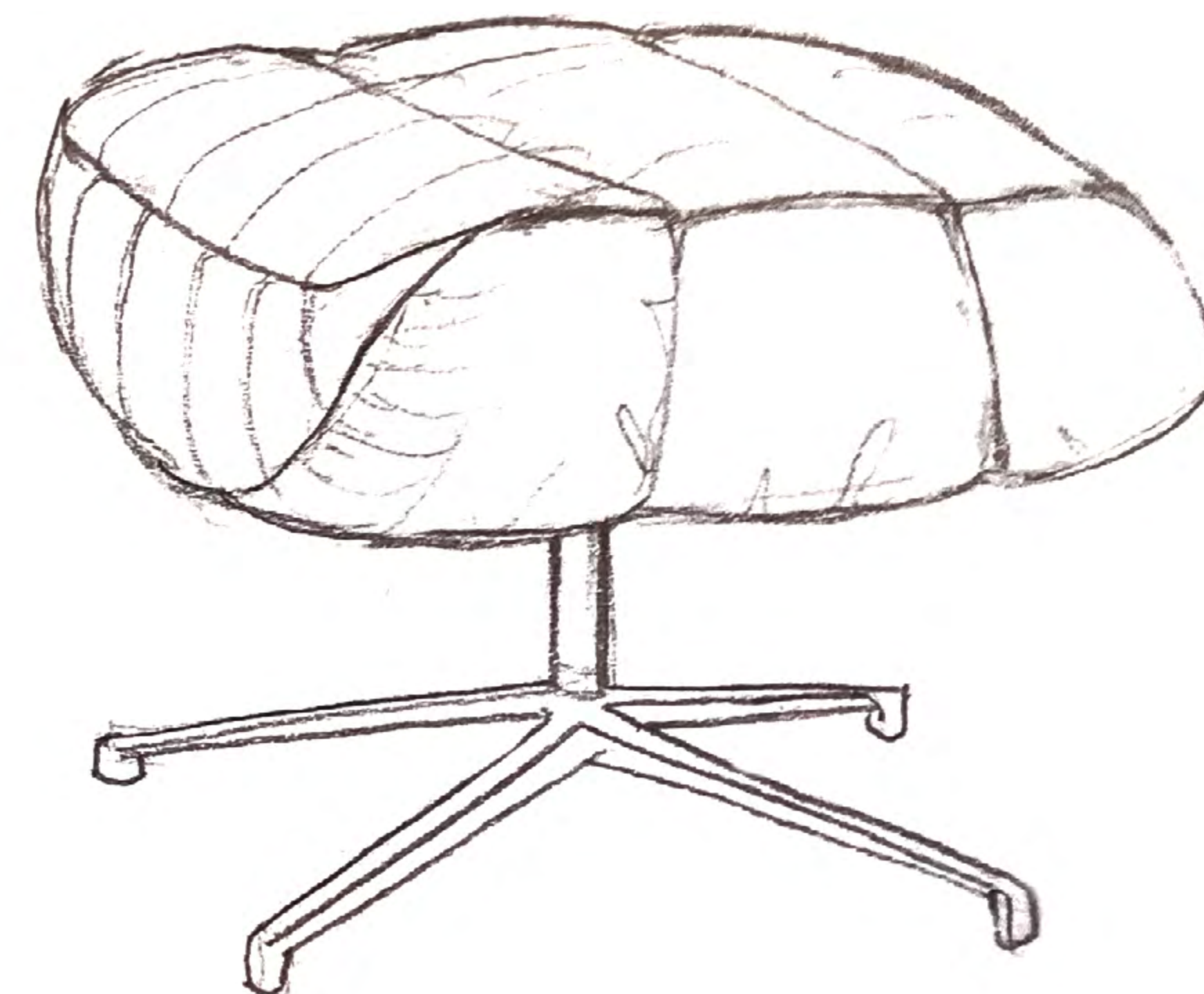
STOFF · CURACAO 65 9622



STOFF · PARADISE 68 5135

*„ The indentations
in the form of curved
lines fix the upholstery
and give the design their
distinctive character „*

Design:
Dagmar Marsetz
Dipl. Designer



Dagmar Marsetz

Design development

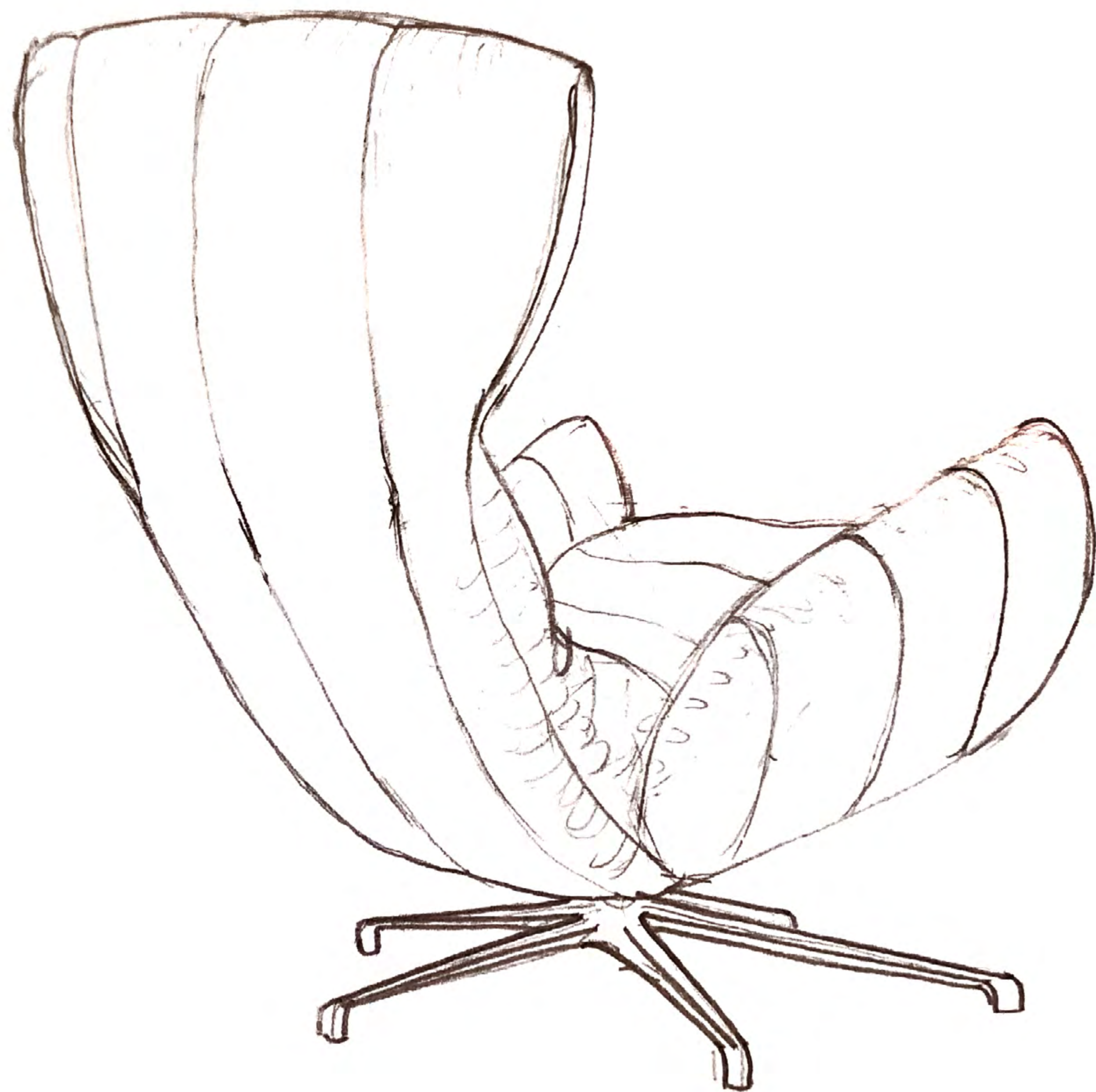
The challenge in the design process was the redefining the shape of the Cassia dining chair into a loungechair.

There are other requirements in terms of comfort, especially of the seating.

Thus, it was particularly important to us that you can drop comfortably into the seat. For this we have a slightly higher seat structure and an integrated bonellspring .

The proportions of the arm and backrest are highly sacalized and optimized for relaxed sitting.

The indents in the form of curved lines lines fix the upholstery and give the design its its recognition value.



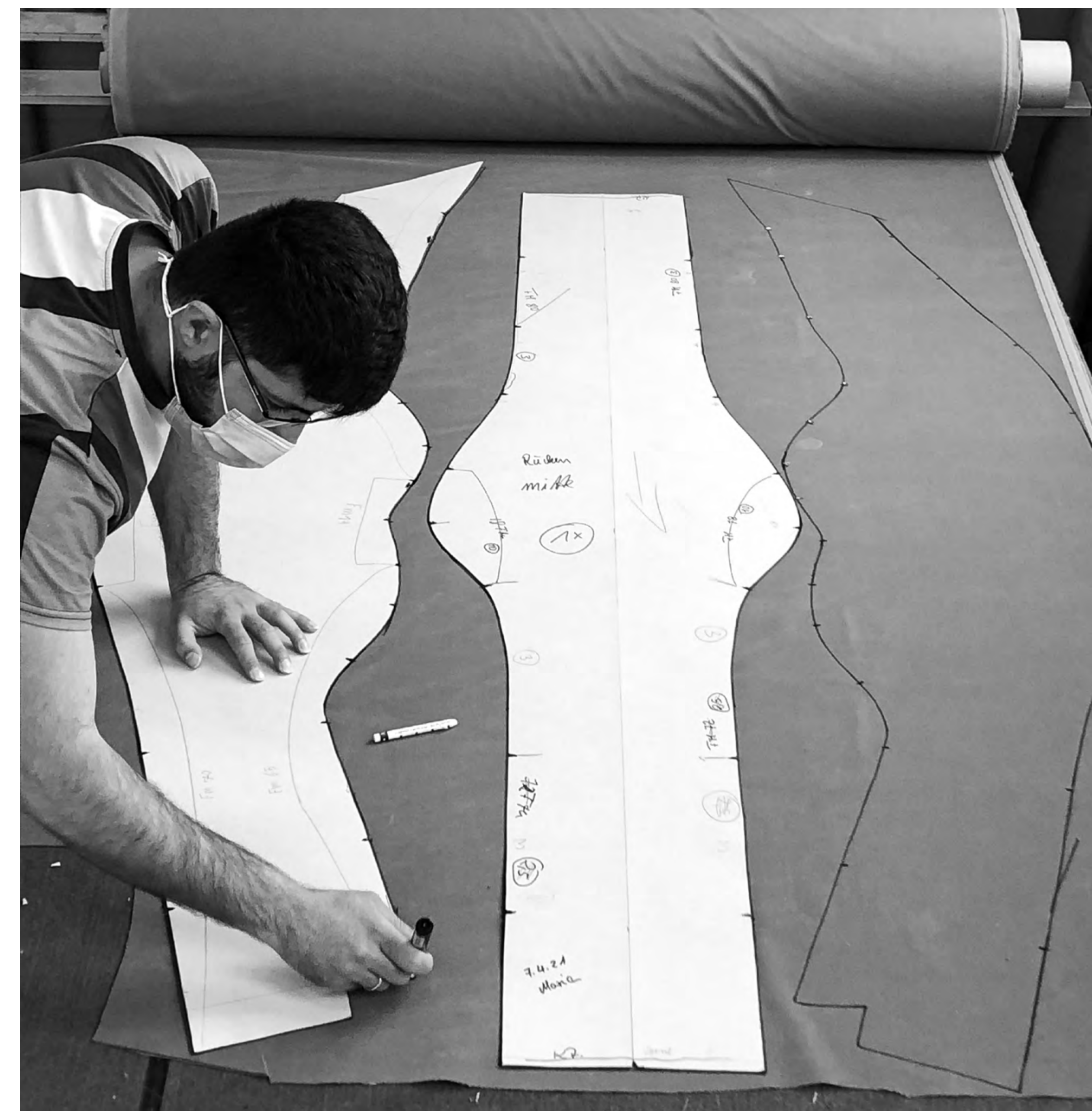
Daymen Muehl



*The first design steps:
The silhouette is created by working
with colored construction paper.*

COLLECTION CASSIA LOUNGECHAIR

COLLECTION CASSIA LOUNGECHAIR



The pattern is transferred from the cardboard template to the fabric

Here is tested the solution for a detail on the seat

Impressions from the production



Impressions from the production





COLLECTION CASSIA LOUNGECHAIR

Thank you !



Design:
Dagmar Marsetz
Dipl. Designerin