

BRETZ



DOWNLOAD LINK: [HTTPS://BRETZ.MEDIA/EN/DOWNLOAD/DINING-PRESS-RELEASE/](https://bretz.media/en/download/dining-press-release/)
CONTACT: MEIKE STEINBERG **PHONE:** +49-172-614 36 01
MEIKE.STEINBERG@BRETZ.DE | [HTTPS://BRETZ.COM](https://bretz.com) | [HTTPS://BRETZ.MEDIA](https://bretz.media)

Bretz

DINING

philosophy

A good candlelight dinner needs more than just good food; it's also important to feel comfortable at the table. Almost like being in your favourite restaurant. Because if the ambience is right, the only thing that's really missing is a comfortable chair that invites us to linger and carries us softly through the evening.

And that's where opinions differ greatly: one person needs an armrest, another can do without. A static chair or one that allows for movement? Everyone has their own preferences when it comes to sitting comfortably. Don't worry though, we have the perfect chair for every requirement.

COLLECTION DINING



DINING

facts & highlights

- Robust steel base frame with a handfinished surface sheathed in a semitransparent, lustrous gold/polychrome lacquer
- White Stone table top: MDF core with polymer concrete coating
Scuff-resistant satin matt finish
- Burnt Oak table top: rustic, flamed solid wood boards, bound with resin
- Artisanal look and feel with uneven edge bevelling

OBERFLÄCHE • SURFACE • SURFACE
BURNT OAK

SAMURAI DINING
➤ 150 / 340 CM ➤ 90 / 135 CM

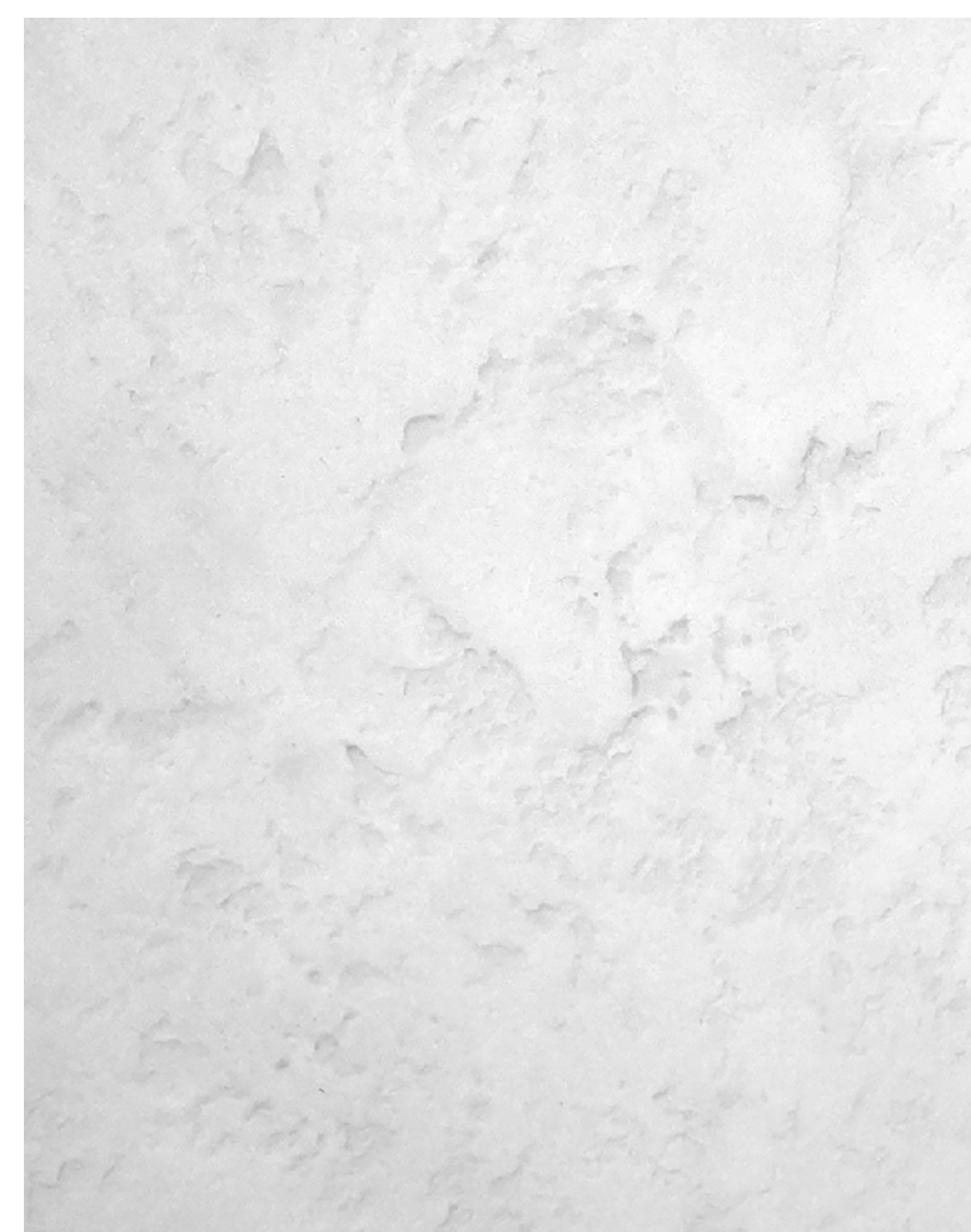


OBERFLÄCHE • SURFACE • SURFACE
WHITE STONE

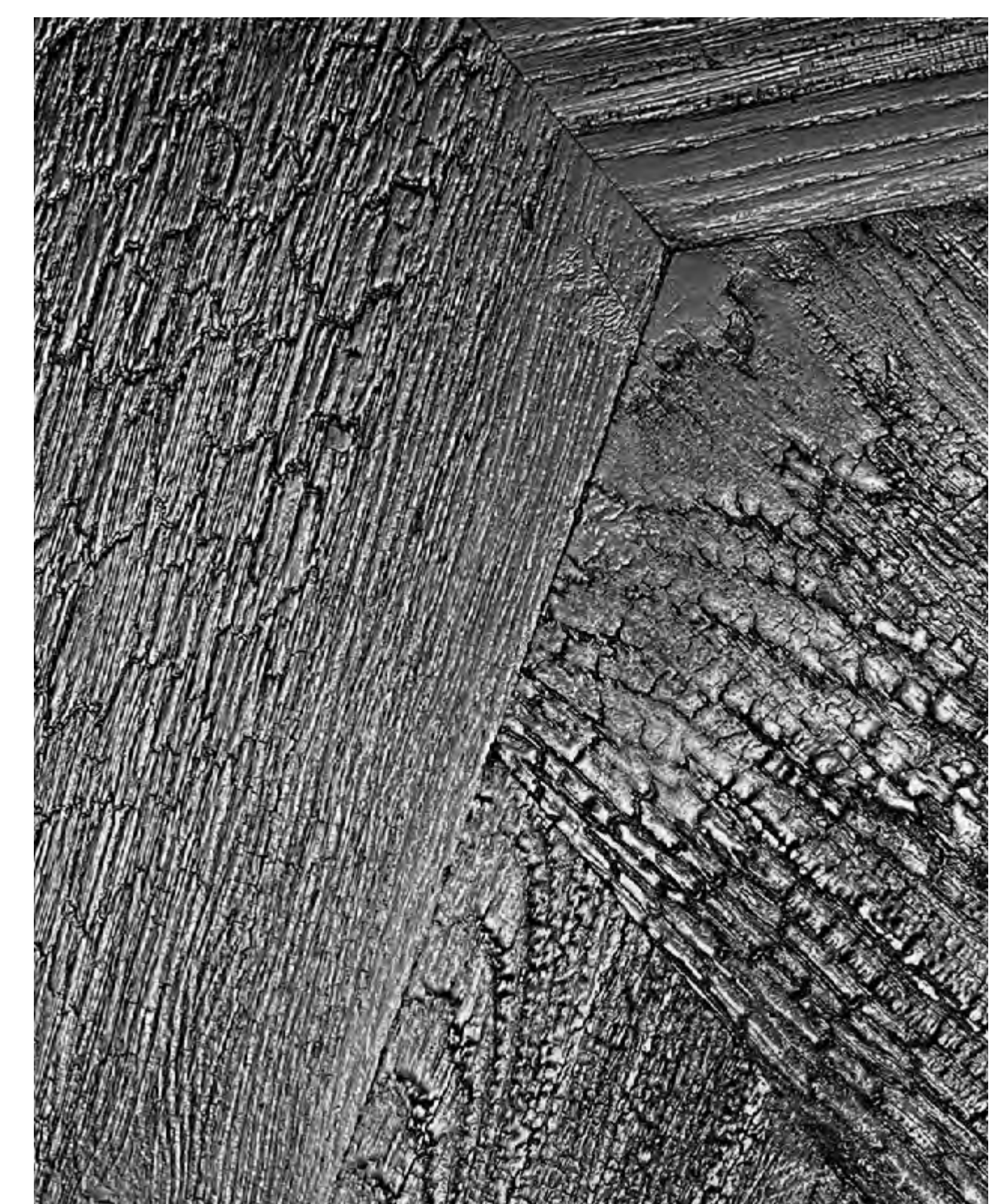
OHLINDA DINING
➤ 150 / 340 CM ➤ 90 / 135 CM



OBERFLÄCHE • SURFACE • SURFACE
WHITE STONE



OBERFLÄCHE • SURFACE • SURFACE
BURNT OAK



CASSIA

Facts & Highlights

- Flexible hybrid between chair and armchair: incredibly comfortable so that you can sit around a table with your friends for hours
- Linear indentations at the back and in the seat underline the symmetry of a flower pattern
- Casual upholster and the flower form cling to your body
- For any direct communication around the table: A rotatable frame in matt black and powder-coated or in silver.
- dimensions: ➤ 67 CM ↗ 57 CM ▲ 87 CM



CASSIA CHAIR B156

➤ 67 CM ↗ 57 CM ▲ 87 CM
STOFF • FABRIC • TISSU 641978



CASSIA CHAIR B156

➤ 67 CM ↗ 57 CM ▲ 87 CM
STOFF • FABRIC • TISSU 641968



COLLECTION DINING

CASSIA

Cashmere



OBERFLÄCHE • SURFACE • SURFACE
BURNT OAK

OHLINDA DINING
➤ 150 / 340 CM ➤ 90 / 135 CM



CASSIA CHAIR B156

➤ 67 CM ➤ 57 CM ➤ 87 CM
STOFF • FABRIC • TISSU 641985

CASSIA

Pop



CASSIA CHAIR B156

➤ 67 CM ➤ 57 CM ▲ 87 CM

STOFF • FABRIC • TISSU

641916 PINK
641934 DARK CYAN
641968 TERRA COTTA
641978 GOLD GREEN
641984 POWDER GREY

OHLINDA TABLE DINING
STANDARD Ø 135 CM
SPECIAL Ø 105 / 120 CM
▲ 75 CM
OBERFLÄCHE • SURFACE • SURFACE
BURNT OAK

COLLECTION DINING

OHLINDA

Facts & Highlights

- Double-buttressed steel legs with gold shimmer or anthracite metallic finish
- A wonderful armchair-like comfort
- Optionally with armrest
- Backrest, armrest and seat can be upholstered individually
- dimensions: ➤ 53 CM ➤ 68 CM ▲ 90 CM



OHLINDA TABLE DINING
STANDARD Ø 135 CM
SPECIAL Ø 105 / 120 CM
▲ 75 CM

OBERFLÄCHE • SURFACE • SURFACE
WHITE STONE

OHLINDA

Honey



OHLINDA CHAIR A 118

➤ 53 CM ➤ 68 CM ▲ 90 CM
STOFF • FABRIC • TISSU 641978



OBERFLÄCHE • SURFACE • SURFACE
BURNT OAK

OHLINDA DINING
STANDARD Ø 135 CM
SPECIAL Ø 105 / 120 CM
▲ 75 CM



COLLECTION DINING

W
N
L
N
A
D



COLLECTION DINING

Bretz